



**bartkowski**<sup>TM</sup>  
strategic contracting

# Healthcare/Institutional Industrial/Utilities

**Get the Job Done Right. The First Time.**

Choose a proactive approach with best-in-class industry experts. We're dedicated to bringing you the best work while avoiding downtime and closures—and staying on budget!

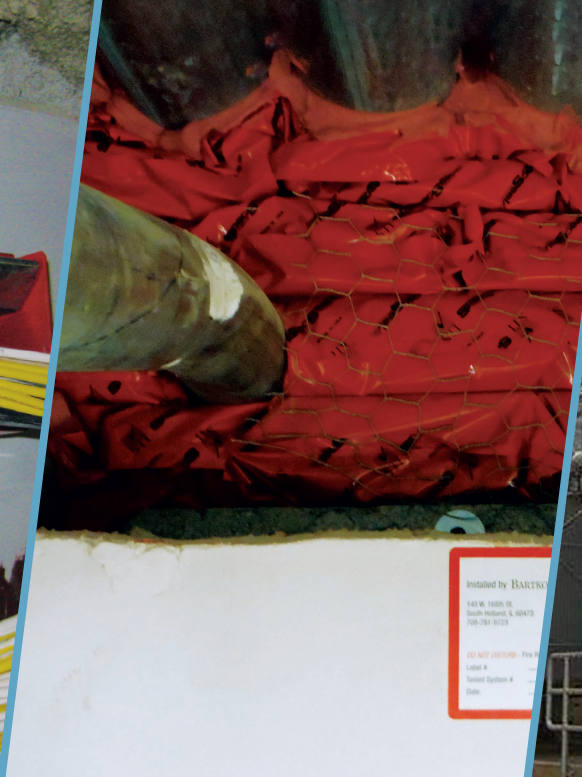
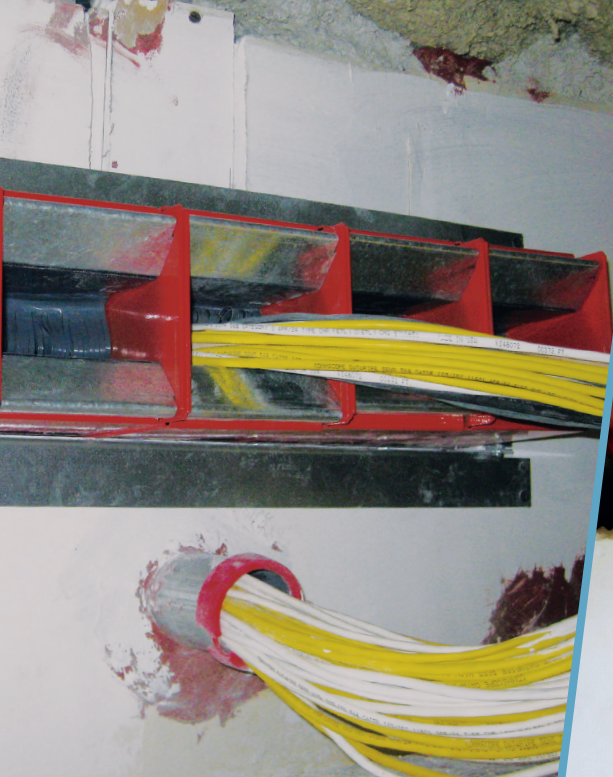
**Your facility is in good hands.**

## THE BARTKOWSKI DIFFERENCE

- ▶ 100% Pass Rating with Authorities Having Jurisdiction
- ▶ Facility Compliance
- ▶ Emergency Response Capabilities
- ▶ Continuity of Operations Assurance
- ▶ Diversity Business
- ▶ 10+ Years Supporting Public & Private Sectors

## CERTIFICATIONS





Cable Pathway Install

Intumescent Pillow Solution

Blast Barrier

## WHERE WE SHINE

- Quality Control
- Emergency Deployment
- Able to Work in Existing/Occupied Areas
- Quick Response Times
- Ability to Mobilize Nationally (28 states & counting!)

## CLIENTS PROTECTED

- Loyola University Medical Center
- Edwards Elmhurst
- UW Madison
- Hines VA Hospital
- Nabisco Factory

## CONTACT

Main Headquarters  
140 W 168th St.  
South Holland, IL  
60473

708-498-0004  
[info@bartlsc.com](mailto:info@bartlsc.com)  
[Bartlsc.com](http://Bartlsc.com)

Bartkowski West  
611 Gateway Blvd.  
San Francisco, CA  
94080

